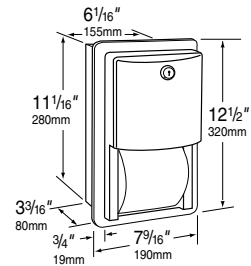
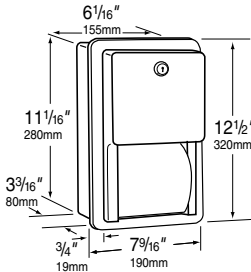


## Recessed



**B-4388 CONTURA SERIES MULTI-ROLL TOILET TISSUE DISPENSER** Satin-finish stainless steel unit with stainless steel dispensing mechanism. Flush tumbler lock. Holds two rolls up to 5 3/4" (133mm) dia. (1800 sheets). Extra roll automatically drops in place when bottom roll is depleted. Theft-resistant, heavy-duty spindles. Extends 2 3/4" (70mm) from wall. Rough Wall Opening: 6 3/4" W, 11 1/4" H, 3 1/4" min. depth (160 x 285 x 83mm). Av. Mtg. Ht.: 28 3/4"-36 3/4" (730-935mm) to top of unit; Barrier-Free, 28 3/4" (730mm). See Barrier-Free Washroom Guidelines on this page. Patented.



**B-3888 CLASSIC SERIES MULTI-ROLL TOILET TISSUE DISPENSER** Similar to B-4388, but door has flat face with protruding tumbler lock.

**B-663 TOILET TISSUE DISPENSER WITH STORAGE SPACE FOR EXTRA ROLL** Bright polished stainless steel. Chrome-plated plastic spindle holds rolls up to 5 1/8" (130mm) dia. (1500 sheets). Recessed mounting cabinet 3 15/16" (100mm) deep holds spare roll. Unit 6 1/4" W, 6 1/4" H (160 x 160mm). Rough Wall Opening: 5 1/2" W, 5 1/2" H, 4" min. depth (140 x 140 x 102mm). Universal/Barrier-Free Mtg. Ht.: 22 7/8" (560mm) to top of unit. See Barrier-Free Washroom Guidelines on this page.



**B-6637** Similar to B-663, but with satin finish.

*Theft-Resistant Spindle (Part No. 283-604) available as replacement part for above models.*

**BARrier-FREE WASHROOM GUIDELINES**  
TOILET TISSUE DISPENSERS. For universal access, roll-type dispensers without controlled delivery are preferred. Folded-tissue dispensers are not recommended because they require a finger-pinching action. Standard toilet tissue rolls should be mounted with their forward edge no more than 36" (915mm) from the back wall, their vertical centerline 7" to 9" (180-230mm) in front of toilet seat, and their horizontal centerline at least 19" (485mm) above the finish floor.

## Surface Mounted

**B-4288 CONTURA SERIES MULTI-ROLL TOILET TISSUE DISPENSER** Satin-finish stainless steel unit with stainless steel dispensing mechanism. Flush tumbler lock. Holds two rolls up to 5 3/4" (133mm) dia. (1800 sheets). Extra roll automatically drops in place when bottom roll is depleted. Theft-resistant, heavy-duty spindles. Unit 6 1/2" W, 11" H, 5 15/16" D (155 x 280 x 150mm). Av. Mtg. Ht.: 28"-36" (710-915mm) to top of unit; Barrier-Free 28" (710mm). See Barrier-Free Washroom Guidelines on this page. Patented.



**B-2888 CLASSIC SERIES MULTI-ROLL TOILET TISSUE DISPENSER** Similar to B-4288, but door has flat face with protruding tumbler lock. See Barrier-Free Washroom Guidelines on this page.



**B-5288 MATRIX SERIES MULTI-ROLL TOILET TISSUE DISPENSER** Durable ABS plastic; grey color. Two-roll dispensing mechanism for rolls up to 5 3/4" (145mm) dia. (2000 sheets). Extra roll easily shifts into place when bottom roll is depleted. Concealed locking device. Unit 6 1/4" W, 13 1/2" H, 6 7/8" D (160 x 345 x 175mm). Av. Mtg. Ht.: 28"-36" (710-915mm) to top of unit; Barrier-Free 28" (710mm). See Barrier-Free Washroom Guidelines on this page. Patented.



**B-2892 CLASSIC SERIES TWIN JUMBO-ROLL TOILET TISSUE DISPENSER** Satin-finish stainless steel. Equipped with tumbler lock. Spindles hold two 10" (255mm) dia. rolls with 2 1/4" (55mm) dia. core rolls; convertible for 3" (75mm) dia. core rolls. Sliding access panel exposes one roll at a time, allows easy roll change-over. Wide viewing slot in door. Quick reloading. Unit 20 13/16" W, 11 3/8" H, 5 5/16" D (530 x 290 x 135mm). Universal/Barrier-Free Mtg. Ht.: 30" (760mm) to top of unit. See Barrier-Free Washroom Guidelines on this page. Patented.



**B-667**



**B-697**



**B-699**

- 600 SERIES RECESSED TOILET TISSUE DISPENSERS**
- Type 304 stainless steel with one-piece seamless construction.
  - Choice of finish: bright polished or satin.
  - Chrome-plated plastic spindles hold rolls up to 5 1/8" (130mm) dia. (1500 sheets).
  - Choice of capacity: single-roll models measure 6 1/8" W

- x 6 1/8" H (155 x 155mm); double-roll models measure 12 3/16" W x 6 1/8" H (315 x 155mm).
- Mounting: mounting clamps for securing to stud walls or countertop aprons.
- Rough Wall Openings: single-roll models require 5 1/2" W x 5 1/4" H x 3 3/8" min. depth (140 x 135 x 85mm), double-roll models require 11 3/4" W x 5 1/4" H x 3 3/8" min. depth (300 x 135 x 85mm).

| *Model No. | Capacity |         | Bright | Finish | Satin | Stainless Steel Hoops |
|------------|----------|---------|--------|--------|-------|-----------------------|
|            | 1 Roll   | 2 Rolls |        |        |       |                       |
| ⚡B-667     | ✓        |         | ✓      |        |       |                       |
| B-6677     | ✓        |         |        |        | ✓     |                       |
| B-669      | ✓        |         | ✓      |        |       | ✓                     |
| B-6697     | ✓        |         |        |        | ✓     | ✓                     |
| ⚡B-697     |          | ✓       | ✓      |        |       |                       |
| B-6977     |          | ✓       |        |        | ✓     |                       |
| B-699      |          | ✓       | ✓      |        |       | ✓                     |
| B-6997     |          | ✓       |        |        | ✓     | ✓                     |

\*Theft-Resistant Spindle (Part No. 283-604) available as replacement part for all models.

|              |                  |     |
|--------------|------------------|-----|
| <b>PRICE</b> | Contura™ Series  | 1.8 |
|              | TrimLine™ Series | 1.5 |
| <b>INDEX</b> | Classic™ Series  | 1.0 |
|              | Matrix™ Series   | 0.6 |

Note: Price index is a comparison of toilet accessories for a typical washroom of popularly specified products. Product mix may affect Price Index comparisons.



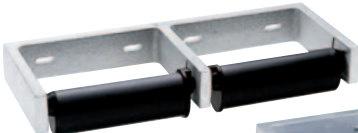
NEW

**B-2890 SINGLE JUMBO-ROLL TOILET TISSUE DISPENSER** Satin finish stainless steel. Equipped with spring lock. Spindle holds one 10" (255mm) dia. roll with 3" (75mm) dia. core. Convertible for 2 1/4" (70mm) and 1 5/8" (40mm) dia. core rolls. Powder-coated mounting plate. Slot in door reveals tissue supply. Unit 10 5/8" W, 10 5/8" H, 4 1/2" D (270 x 270 x 115mm). Universal/Barrier-Free Mtg. Ht.: 29 1/2" (750mm) to top of unit. See Barrier-Free Washroom Guidelines on page 32.



**B-52891 MATRIX SERIES JUMBO-ROLL TOILET TISSUE DISPENSER** Durable ABS plastic; grey color. Spindle holds one 10" (255mm) dia. roll with 3" (75mm) dia. core; convertible in field to hold 2 1/4" (55mm) dia. core roll. Concealed locking device. Viewing slot in door. Unit 10 3/4" W, 12 3/16" H, 5 1/4" D (275 x 320 x 135mm). Universal/Barrier-Free Mtg. Ht.: 31" (785mm) to top of unit. See Barrier-Free Washroom Guidelines on page 32. Patented.

core roll. Concealed locking device. Viewing slot in door. Unit 10 3/4" W, 12 3/16" H, 5 1/4" D (275 x 320 x 135mm). Universal/Barrier-Free Mtg. Ht.: 31" (785mm) to top of unit. See Barrier-Free Washroom Guidelines on page 32. Patented.



B-2740



B-2730

**B-2740 CLASSIC SERIES TOILET TISSUE DISPENSER FOR TWO ROLLS** Heavy-duty cast aluminum, satin finish. High-impact plastic spindles have concealed locking device; theft-resistant. Holds two rolls up to 6" (150mm) dia. (2000 sheets). Unit 12 1/2" (320mm) wide, projects 4 7/8" (125mm) from wall. No controlled delivery. Universal/Barrier-Free Mtg. Ht.: 19 3/4" (500mm) to top of unit. See Barrier-Free Washroom Guidelines on page 32.

**B-274** Similar to B-2740, with controlled delivery.

**B-2730 TOILET TISSUE DISPENSER FOR SINGLE ROLL** Unit 6 1/2" (165mm) wide, projects 4 7/8" (125mm) from wall. No controlled delivery.

**B-273** Similar to B-2730, with controlled delivery.



**283-604 THEFT-RESISTANT SPINDLE**

Molded plastic spindle with concealed locking feature is available as an option for Bobrick surface-mounted and recessed toilet tissue dispensers where noted. After rolls are depleted, spindle is removed with special key furnished; theft-resistant. Patented. Theft-resistant spindle may be ordered as a replacement part.



B-2840

**B-2840 TOILET TISSUE DISPENSER WITH SHELF** Satin-finish stainless steel. Shelf has 1/2" (13mm) returns, hemmed front edge. Chrome-plated plastic spindles hold rolls up to 5 1/2" (140mm) dia. (1800 sheets). Unit 16" W, 4" H, 5" D (405 x 100 x 125mm). Universal/Barrier-Free Mtg. Ht.: 22" (560mm) to top of unit. See Barrier-Free Washroom Guidelines on page 32.

*Theft-Resistant Spindle (Part No. 283-604) available as replacement part for above model.*



**B-27460 TOILET TISSUE DISPENSER FOR TWO ROLLS** Vandal-resistant unit; heavy-duty cast aluminum, satin-finish. Tumbler lock secures spindles in place. High-impact plastic spindles hold rolls up to 6" (150mm) dia. (2000 sheets). Unit 14 1/8" (360mm) wide, projects 5 1/4" (135mm) from wall. No controlled delivery. Universal/Barrier-Free Mtg. Ht.: 20 1/8" (510mm) to top of unit. See Barrier-Free Washroom Guidelines on page 32. Patented.

**B-2746** Similar to B-27460, with controlled delivery. Patented.



**B-264 CLASSIC SERIES TOILET TISSUE DISPENSER FOR SINGLE ROLL** Bright polished chrome-plated steel. Vandal-resistant, self-locking mechanism. Controlled delivery. Toilet tissue roll will not spin freely. Eliminates waste. Accommodates one standard-core toilet tissue roll up to 4 1/2" (115mm) diameter. Roll cannot be removed from dispenser until empty. Unit 6" W, 2 3/4" H (150 x 70mm); projects 4 1/4" (110mm) from wall.



**B-265 CLASSIC SERIES TOILET TISSUE DISPENSER FOR TWO ROLLS** Similar to B-264, Unit 12 1/4" W, 2 3/4" H (310 x 70mm), projects 4 1/4" (110mm) from wall.

**B-272 TOILET TISSUE CABINET** Satin-finish stainless steel. Equipped with tumbler lock; vandal-resistant. Dispenses either single- or doublefold toilet tissue. Large capacity: 1330 singlefold tissues. Slots in cabinet indicate refill time. May be refilled with full standard pack before dispenser is empty. Unit 5" W, 8 15/16" H, 3" D (125 x 225 x 710mm).



B-7686



B-7685

**B-7685 CLASSIC SERIES TOILET TISSUE DISPENSER FOR SINGLE ROLL** Bright polished stainless steel. Support-arm flanges lock to concealed stainless steel wall plate. Chrome-plated plastic spindle holds rolls up to 5 1/2" (140mm) dia. (1800 sheets). Unit 7 1/4" W, 2" H (185 x 50mm); projects 3 15/16" (100mm) from wall. Universal/Barrier-Free Mtg. Ht.: 20" (510mm) to top of unit. See Barrier-Free Washroom Guidelines on page 32.

**B-76857** Similar to B-7685, but with satin finish.

**B-685 TOILET TISSUE DISPENSER FOR SINGLE ROLL** Bright polished stainless steel. Support-arm flanges lock to concealed stainless steel wall plate. Chrome-plated plastic spindle holds rolls up to 5 1/2" (140mm) dia. (1800 sheets). Unit 7 1/4" W, 2" H (185 x 50mm); projects 3 15/16" (100mm) from wall.

**B-6857** Similar to B-685, but with satin finish.

**B-7686 CLASSIC SERIES TOILET TISSUE DISPENSER FOR TWO ROLLS** Bright polished finish. Unit 12 1/2" W, 2" H (320 x 50mm); projects 3 15/16" (100mm) from wall.

**B-76867** Similar to B-7686, but with satin finish.

**B-686 TOILET TISSUE DISPENSER FOR TWO ROLLS** Bright polished finish. Unit 12 1/2" W, 2" H (320 x 50mm); projects 3 15/16" (100mm) from wall.

**B-6867** Similar to B-686, but with satin finish.

*Theft-Resistant Spindle (Part No. 283-604) available as replacement part for above models.*

**B-6699 TOILET TISSUE DISPENSER WITH HOOD FOR SINGLE ROLL** Bright polished stainless steel. Hood protects paper. Chrome-plated plastic spindle holds rolls up to 5 1/8" (130mm) dia. (1500 sheets). Unit 6 3/16" W, 6 3/16" H (155 x 155mm); hood projects 4 3/4" (120mm) from wall with full roll in place. Universal/Barrier-Free Mtg. Ht.: 22" (560mm) to top of unit. See Barrier-Free Washroom Guidelines on page 32.



B-6699

**B-66997** Similar to B-6699, but with satin finish.

**B-6999 TOILET TISSUE DISPENSER WITH HOODS FOR TWO ROLLS** Bright polished finish. Unit 12 3/8" W, 6 3/16" H (315 x 155mm); hoods project 4 3/4" (120mm) from wall with full roll in place.

**B-69997** Similar to B-6999, but with satin finish.

*Theft-Resistant Spindle (Part No. 283-604) available as replacement part for above models.*